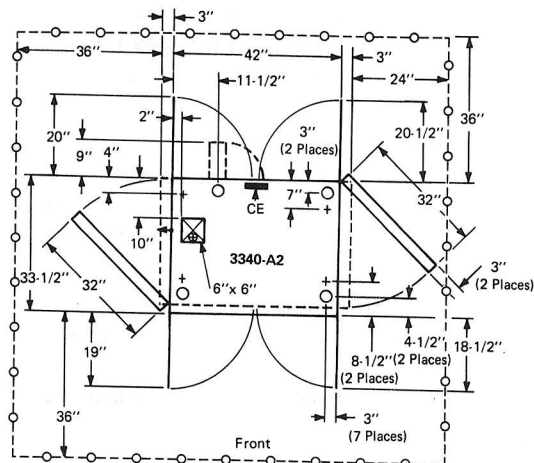


## 3340 DISK STORAGE MODEL A2

### Plan View



### Specifications

#### Dimensions:

	Width	Depth	Height
Inches	42*	33-1/2	46-1/2
Centimeters	114*	85	118

#### Service Clearances:

	Front	Rear	Right	Left
Inches	36	36	0**	36
Centimeters	91	91	0**	91

**Weight (Maximum):** 900 lb (410 kg)

**Heat Output/hr:** 6500 Btu (1650 kcal)

**Airflow/min:** 400 ft<sup>3</sup> (12 m<sup>3</sup>)

#### Power Requirements:

Voltage	208/230 ± 10%
kVA	2.2
Phases	3
Plug Type	D
Power cord style	D2

#### Operating Environment:

Temperature	60° to 90° F (16° to 32° C)
Relative humidity	20% to 80%
Maximum wet bulb	78° F (26° C)

#### Nonoperating Environment:

Temperature	50° to 110° F (10° to 43° C)
Relative humidity	8% to 80%
Maximum wet bulb	80° F (27° C)

\* The stand alone dimension is 48 inches (122 cm) with a 3-inch (8-cm) end cover added. One 3340-B1 or one 3340-B2 can be attached to the right side of a 3340-A2.

\*\* Service clearance is 24 inches (61 cm) if a 3340-B1 or 3340-B2 is not attached.

